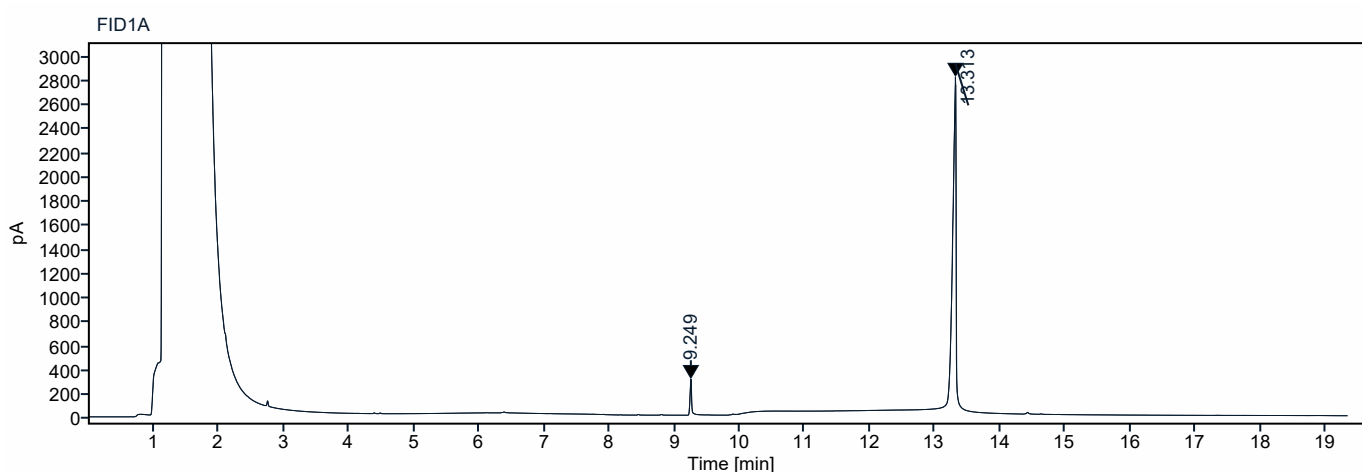


Single Injection Report



Data file: 160.1.dx
Sequence Name: SingleSample
Sample name: 160.1
Instrument: GC1
Inj. volume: 1.000 µL
Acq. method: PRH 40-300 15DM.amx
Processing method: GC_LC Area
Percent_DefaultMethod_Liam
Edit.pmx
Manually modified: Manual Integration

Project Name: Cosgrove lab
Operator: AdminGC1 (Admin)
Injection date: 2025-05-13 16:27:16+01:00
Location: 108
Type: Sample
Sample amount: 0.00



Signal: FID1A

RT [min]	Type	Width [min]	Area	Height	Area%	Name
9.249	MM m	0.11	524.76	296.92	4.49	
13.313	MM m	0.33	11150.65	2796.55	95.51	
		Sum	11675.41			